



Subject to modifications.

GEA One Homogenizer 75TF

Technical data | High Pressure Homogenizer

The One series homogenizers, compliant to EU safety rules (CE standards) and built according to EN ISO 9001:2008 Quality System, are the best fit for dairy, food & beverage applications.

Available up to 250 bar, suitable for CIP and SIP, the One TF machines are the fit for purpose solution for medium size process lines. The energy efficient solution of One range allows to reduce consumptions and optimize the running costs.

Main options

- 2nd stage homogenizing valve
- Pressure gauge for 2nd stage
- Build in electric powerboard
- Inlet pressure transducer with display and low pressure alarm
- Pressure gauge with transmitter 4-20 mA for 1st and 2nd stage
- Inlet/outlet pulsation dampeners
- Solenoid valves for water and air
- Variable speed drive
- Water flow switch
- Safety valve (SLRV) with handle suitable for CIP

Sustainability values

Energy consumption/1000 l product (kWh)	4,5
Water consumption/1000 l product (l)	9
Lubricating and cooling water	90 l/h
Oil consumption ISO VG 150	30 l/2.000 h
Noise level	≤78 dB(A) ± 2
Carbon footprint/1000 l product (kg CO2)	2,29

Technical data

Number of plungers	3
Absorbed motor power up to	75 kW
Net weight	2.400 kg
Gross weight	2.600 kg

Process data

Sanitary execution: max. capacity at 150 bar; water max. hardness <15°fH, max. particle size 60 microns, filtered water; noise level at max. capacity and max. pressure at 1 meter distance; CO2 emissions based on electricity production generating 0,5 kg CO2/kWh.

Technical data | High Pressure Homogenizer

Liquid end

- Engineered with a reduced number of parts for simplified use and maintenance
- High quality forged stainless steel and special high wear resistant materials for best mechanical and corrosion resistance performance
- Monoblock construction compression head

Homogenizing valve

- Wear parts in solid tungsten carbide for extended operation
- One stage with pneumatic adjustment from the machine's control panel
- Second stage as option

Power end

- Cast iron power frame
- Heavy duty and reliable power frame housing the transmission elements
- G-FX drive system for gearbox
- "V" belts drive and gearbox speed reduction unit
- AC motor drive (IE or equivalent)
- Forced lubrication with gear pump and low oil pressure switch

Casing

- Made of polished stainless steel
- Easy access and maintenance with removable panels
- Cabinet fan

Plungers

- Chrome coated stainless steel
- Self centering threaded connection

Pump valves

- High Resistant AISI 630 alloy reversible valve seats
- Poppet type (PVP) in Stellite™

Pressure measurement & control

- Sanitary design analog high pressure gauge

Safety devices

- Overpressure relief valve installed on the compression block
- Version with handle as option
- Emergency push button with reset

Product line connections

- DIN 11851 fittings
- Tri-Clamp™ fittings
- SMS fittings

GEA Mechanical Equipment Italia S.p.A.

Via A.M. Da Erba Edoari, 29
43123 Parma, Italy

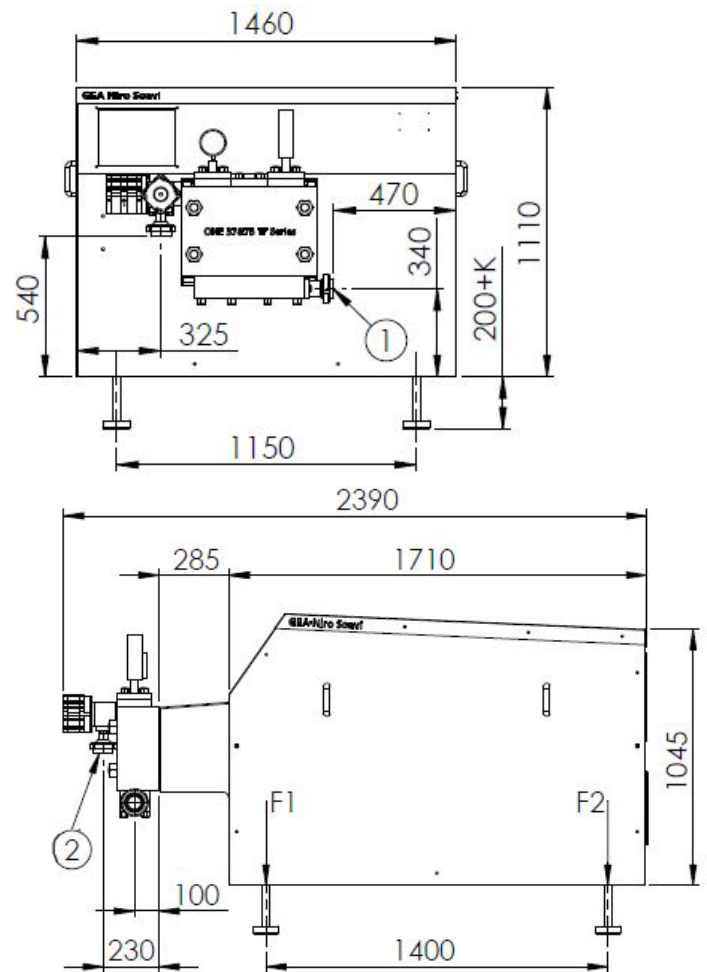
Tel +39 0521 965411
gea.com/contact

Tools and spare parts

- Ordinary maintenance tools and one set of emergency spare parts supplied with the machine
- O&M manual and spare part list on USB stick

Dimensional drawing

Overall dimensions (mm)



Performance

Pressure (bar)	Max Flow Rate (l/h)
100 - 150	10.000
150	10.000
170	10.000
180	10.000
200	10.000

Performance

Pressure (bar)	Max Flow Rate (l/h)
210	10.000
220	10.000
230	10.000
240	10.000
250	9.800

Each line refers to a different machine, which is designed for the specified maximum pressure and maximum capacity in the above table.